

Littleover Life

March 2019



EDDOWES
WALDRON
Personal Injury
Solicitors

We are an established firm of solicitors in Derby, who specialise in personal injury claims.

We offer: Free Assessments of Claims, Home and Out of Hours Visits, Maximum Compensation and No Win No Fee Agreements.



- Accidents at Work
- Serious Injury Claims
- Slips / Trips & Falls
- Fatal Accidents



Eddowes Waldron Solicitors

12 St. Peter's Churchyard, Derby, DE1 1TZ

T: 01332 348 484

info@ewlaw.co.uk

www.ewlaw.co.uk



Free
Issue 138



Cinnamon LOUNGE



Midweek 4 Course Meal

Sunday - Thursday from 6.00pm till 10.00pm

£12.95 per person

Papadom & Pickles

Starters A choice of:

Tandoori Mix Kebab	Chicken Puree Chana Puree	Chicken Tikka Onion Bhaji	Vegetable Samosa
Shahi Murgh Fish Pakora	Paneer Tikka	Meat Samosa	Chicken Chaat Sheek Kebab

Main Course A choice of:

Tikka Massala Jalfrezi	Minty Curry	Malaya Dhansak	Rogan Josh
Garlic Chilli Pasanda	Madras Vindaloo	Pathia Bhuna	Dupiaza Sagwala
Jaipur	Korma		Balti

AVAILABLE WITH: CHICKEN, LAMB, VEGETABLE OR CHICKEN TIKKA

Naga Cooked with onions and peppers and a touch of chef's naga pickle to produce a hot finish.

Sri Lanka Cooked with green beans and coconut producing a spicy finish.

Bombay Chicken or lamb cooked with Bombay potatoes to a medium finish.

Thengapal Chicken or lamb cooked with tamarind and spiced mango with a touch of garlic and dry chilli, cooked in a medium to fairly hot and sour sauce.

Accompaniments A choice of:

Boiled Rice Pilau Rice	Fried Rice Plain Naan	Garlic Naan Keema Naan	Peshwari Naan Cheese Naan
---------------------------	--------------------------	---------------------------	------------------------------

Dessert Vanilla Ice Cream

NO CHANGES CAN BE MADE TO THIS MENU & STRICTLY NO SHARING.

165 - 167 Ladybank Rd, Mickleover, Derby DE3 0QF

T: 01332 523553 Opening Hours: Sunday - Saturday 5.30pm - 11pm

CBD FIRST

BY VAPOUROUND CBD

DERBYSHIRE'S

CBD

SPECIALISTS

OPEN MONDAY TO SATURDAY FROM 10AM TO 8PM.
VISIT US IN LITTLEOVER OR SHOP ONLINE

CBDFIRSTONLINE.CO.UK

CURIOUS ABOUT CBD? ASK A MEMBER OF
STAFF, OR MESSAGE US ON FACEBOOK

OVER 18s ONLY. FIND US AT 28 HIGHFIELD RD,
LITTLEOVER, DE23 1DG

DOING BUSINESS WITHOUT **ADVERTISING** IS LIKE WINKING AT A GIRL IN THE DARK.

YOU KNOW WHAT YOU'RE DOING, BUT NOBODY ELSE DOES.

- Stuart H. Britt



Let us help you connect with your customers

E-mail: derbymagazines@gmail.com

Tel: 01332 416242 Mob: 07969 541878

See our latest edition online! www.warwickdirectories.co.uk/Latest-Editions

With March upon us we can herald the start of spring... the days are just that fraction longer, offering a glimpse of the season to come. Flowers are starting to poke through the ground and I, for one, am crossing my fingers that we don't have a storm that blows in the snow... roll on sunshine as far as I'm concerned!



In March there are some good things to look forward to....1) Pancake day on 5th March (see our recipe on page 8 in case you need a reminder. 2) It's Mothers Day on 31st March, and 3) British Summer time begins, also on 31st March. I always lose track as to whether we gain and hour or lose an hour although now I get up far earlier than my children it doesn't seem as important!

If you would like to contribute in any way or have any feedback, please just get in touch. If you are a business that would like to advertise in these pages, call us for a chat, we are friendly, helpful and there's no obligation.

Have a wonderful March!
Best wishes



Fiona



Follow us on FB, Littleover Life



Instagram: [Lifeofads_derby](https://www.instagram.com/Lifeofads_derby)



Call:
01332 416 242

Business advertising enquiries:
derbymagazines@gmail.com

Classifieds / for sale items:
classifieds@warwickdirectories.co.uk

Village News:
villagenews@warwickdirectories.co.uk

I would also like to take this opportunity to remind all our readers that the Village News and Readers Letters sections of the magazine offered free of charge to charities, groups and societies and to any information that may be of use to the readership. It does not necessarily represent the views of me, as Editor or Warwick Directories Ltd and as such accept no responsibility or liability for the accuracy or truthfulness of any statements made.



On the 28th April, I will be attempting to complete the gruelling London Marathon on behalf of Rainbows hospice. From a personal perspective, the charity has provided fantastic, tailored support throughout my cousin's life which undoubtedly extended his time with us. Furthermore, the support given to family members has always been superb. Hence why I have always tried to give something back to the charity, whether it be completing 5k runs or organising the collection of gifts for children at Christmas.

The same level of service is provided for every single young person and their family who benefit from Rainbow' support; I strongly believe that the support offered benefits people immensely.

Rather selfishly the completion of a marathon has always been a personal goal; I have completed much shorter distances before but a marathon will certainly be a shock to the system! I have been training throughout the winter and have also been organising a variety of fundraising events to reach the £2500 minimum I have to raise to justify my place in the marathon.

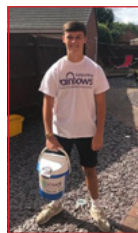
Now comes the part where I ask you all for money! Any donations would be greatly appreciated; I understand we all have budget constraints but if you can have one less pint/glass of wine / coffee / slice of cake and donate instead Rainbows would benefit massively. Thank you for taking your time to read my page; if you have any questions don't hesitate to message me!

Donating through JustGiving is simple, fast and totally secure. Your details are safe with JustGiving - they'll never sell them on or send unwanted emails. Once you donate, they'll send your money directly to the charity. So, it's the most efficient way to donate - saving time and cutting costs for the charity.

Thank you all for any support you are able to offer.

Charlie

www.justgiving.com/fundraising/charlie-gregory1



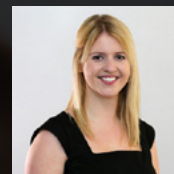
**SMITH
PARTNERSHIP**
SOLICITORS

DO YOU HAVE A WILL?

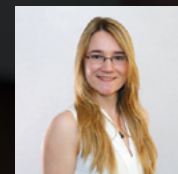
OUR EXPERTS



Luke Smyth



Sarah Clark



Kate George

Please quote CoMag19 when contacting us.

Working with Smith Partnership is as **simple as 0330 123 1229**

OFFICES IN:
Derby, Burton, Leicester, Stoke & Swadlincote
www.smithpartnership.co.uk

f @smithpartnership

t @smithship





Lucy Quy

I am a full-time mum who has an enormous passion for making things, especially cooking and baking. I juggle a crazy family life which consists of a very supportive husband, two highly energetic children, an amazing horse, 2 adorable dogs and a bizarre but very friendly pet hedgehog called Smuggles! I cook every day and enjoy simple recipes made from a few fresh and simple ingredients which are easy to put together to create delicious food for my family and friends. I hope that you will enjoy my recipes and have fun making them yourself x

Breakfast in Bed Fluffy Pancakes

With Mother's Day (and Pancake Day) just around the corner, why not treat the special lady in your life to a delicious breakfast of Fluffy Pancakes with a choice of your favourite toppings. For this recipe I have chosen bananas and maple syrup, with a fresh coffee served in bed! My children love these too, so they are a winner all round, especially covered with chocolate spread, or my mother's particular favourite is crispy bacon and maple syrup, however a lighter option is fresh fruit and a squeeze of fresh orange juice, so get as creative as you like they are totally scrumptious!!!



For the Fluffy Pancake:

200g Self Raising Flour
2 teaspoons of baking powder
3 Large Free-Range Eggs
1 tablespoon Caster Sugar
Pinch of salt
30g of melted butter
210ml of whole milk

For the Banana Topping:

1 ripe banana sliced
sprinkle of icing sugar
Maple syrup

Method:

Put all the dry ingredients in to a bowl and mix thoroughly. Add the eggs, milk and melted butter and whisk until the batter is smooth. Leave covered for 5 minutes. Melt a knob of butter in a frying pan and when hot put a large ladle of batter mix in the centre of the pan (they will spread out, so you are looking for a pancake around 7cm in diameter). Cook on a relatively low heat for 2 minutes on the first side (bubbles will start to appear on the top of the pancake). Then flip and cook for a further minute – the pancake will start to rise and fluff up. Remove from the heat and put on a plate where you can start to assemble your favourite toppings – don't hold back these are meant to be indulgent especially for a Mother's Day treat so go for it!!!!

Happy Mother's Day xx



Easing the burden of your loss.

Losing a loved one is a difficult time for those left behind, who will often feel directionless and uncertain in coming to terms with their loss.

At such a time you need practical, sensible advice from specialist professionals who are able to lighten the load.

We'll help take away the administration and unwelcome burdens associated with your loss, and guide you through the legal and financial complexities of wills, tax and property issues.

Shacklocks are members of the Society of Trust and Estate Practitioners (STEP) and Solicitors for the Elderly (SFE).



For sensitive professional advice following your loss, call us on:

0845 602 2344

Please quote reference GBPP when calling.

Shacklocks LLP
Solicitors & Investment Advisors

[knowledge + application]
www.shacklocks.co.uk

Belper
25 Chapel Street
Belper
Derbyshire
DE56 1AR
01773 822 333

Derby
110 Park Farm Centre
Allestree
Derbyshire
DE22 2QN
01332 559 281

Mansfield
St. Peter's House
Bridge Street
Mansfield
NG18 1AL
01623 626 141

Ripley
6 Chapel Street
Ripley
Derbyshire
DE5 3DL
01773 743 513

Shacklocks LLP is a limited liability partnership, registered in England and Wales, registered number OC360847, registered office St Peter's House, Bridge Street, Mansfield NG18 1AL. Authorised and regulated by the Solicitors Regulation Authority. Authorised and regulated by the Financial Services Authority in the conduct of investment Business.



Stuart Mobility
Reliable Quality Comfort

Rise and Recline Chairs





Sofas



Porter Chairs



Riser Chairs



Firesides



British Made
with quality materials



Delivery & Setup
included on all chairs



Prices
from only £499



Made to Order
also available

Friendly | Family Run | Local Business | Home Visits Available

Call us on **01283 704071**
Go to **stuartmobility.co.uk**
Contact us to visit our showroom in **Burton-on-Trent**

 @stuartmobilityltd
 @StuartMobility
 /stuartmobility





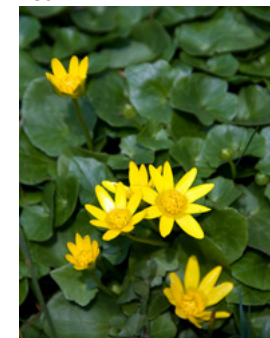





"The sixth sick Sheiks sixth sheeps sick"- supposed by some to be one of the most difficult tongue twisters in the English language and our sheep do indeed come to the fore this month, as we start lambing. Many farmers begun weeks ago and their lambs will be outside and taking advantage of the new spring grass, as it begins to grow.

The daylight hours have extended and the sunshine has some warmth, so as soon as the earth warms up enough, the growth is triggered. The clocks go forward (we lose an hour of sleep) Spring has arrived!

For the last six weeks we have been supplementing the Ewes with some extra feed in the form of ewe rolls- a concentrated pellet that contains protein, vitamins and minerals to help her nutrition. This is when the lambs inside her are growing fastest and taking more from her. We also want her to milk well after their birth and be healthy. I've also checked over our lambing cupboard to make sure we have enough of everything, such as elastic bands for castration, marker sprays for identification, iodine and surgical spirit for cord dipping to prevent infection, antiseptic foot sprays in case the ewe shows signs of



lameness and powdered colostrum just in case.

Other not so important items might include lambing ropes (for difficult births) but we can always use soft cords or baler twine, as long as we're careful, plastic gloves (but we can make sure we wash our hands/ arms thoroughly first), various drenches/ tubes etc.

We've brought some hay in (small bales for us, as they're easiest for us to handle in the lambing shed) as sheep like it, straw for bedding the shed and the lambing pens and cleaned buckets, as hygiene is very important.

If the weather is suitably warm and spring arrives early the farmers will be beginning their field work for the spring sown crops and also preparing the grass for silaging. This might need fertilising and rolling to encourage it to tiller (spread its' roots out further) in order to provide lots of nutritious feed to be preserved for next winter.

Hedge cutting has stopped now and our little stretch of worn out hawthorns has been laid to reinvigorate them and has also been fenced to prevent damage by nibbling sheep and cattle.

There may be a bit of replanting needed to fill gaps. We will see the occasional butterfly or moth around if we have some warm and sunny days or maybe a caterpillar or several will flop onto the paths from the overhanging bushes as they start the cycle of life again.

Flowers are becoming easier to spot and the early celandines are turning their face to the sun once again.

And maybe we will have Brexit or maybe we won't! Uncertainty will not help our industry and who knows how our lamb trade will fare? But the farming year carries on regardless!

Angela Sargent

www.baldfields-farm.co.uk and follow us on twitter (@bythebarn) and facebook (baldfields farm) too!

10% Discount
Available with this ad

The Paint Guy

Where modern technology meets traditional service

Think Smart..
call
07785 623555

**Automotive paint repairs-
-to your door!**

We repair:

- Bumper scuffs.
- Vandal scratches and paint chips.
- Small accident damage.
- Alloy wheel repairs.
- Minor dents.

smart
small
medium
area
repairs
technology

email: steve@thepaintguy.co.uk www.thepaintguy.co.uk

**GET NOTICED
ADVERTISE WITH US**

CALL 01332 416 242

Extra Tuition

Highly qualified teacher has vacancies for extra tuition in all primary subjects. GCSE English and A Level English is also available. Coaching for Common Entrance Examinations and Scholarships. Excellent results consistently achieved.

Mrs. Donoghue M.A. B.Ed (Hons) A.L.C.M.
Telephone : 01332 349678
Email: bardo007@btinternet.com

**Overwhelmed by Tech?
Need help to get the most from your devices?**

We offer tutorials in the comfort of your own home, customised to your needs.

- Phone / Tablet and Computer problems
- Slow WIFI & Internet Issues
- Buying Advice, Installation & Setup
- Backup Advice for your files and photos

Call today for a FREE Assessment with no obligation or visit our website for more information derbyshiretechhelp.com

Derbyshire Tech Help
Andrew King 07494 535993
andrew@derbyshiretechhelp.com

TRUSTED TRADER
Derbyshire County Council

AstlePaterson
When trusted experience matters

We're on your side

In a difficult separation you may not know where to turn. Seeking legal advice isn't easy, but it can help put your mind at ease.

Justine Woodcock is accredited with the family law specialist group, Resolution. With your best interest at heart, she provides sensitive and considered guidance to steer you on the best possible course.

BUSINESS & COMMERCIAL . CONVEYANCING . FAMILY . LITIGATION . WILLS, INHERITANCE TAX & PROBATE . EMPLOYMENT

01283 531366
www.astlepaterson.co.uk

Clay House, 5 Horninglow Street
Burton upon Trent
Staffordshire, DE14 1NG

Justine Woodcock
Chartered Legal Executive:
Divorce & Family

The Grange

AT LITTLEOVER

A Wonderful Venue for:
Weddings, Anniversaries,
Parties and all Celebrations

Our regency Manor House
is set in large
Secluded Gardens
with ample free parking

Contact our Friendly Team
to discuss your Special Day
Telephone
01332 771770

457 Burton Road, Littleover, Derbyshire DE23 6XX
email: sales@grangebanqueting.com www.grangebanqueting.com



Call to hear more
about our
Mothers Day Lunch
on 31st March



Freedom | Focus | Foundation

KORNERSTONE LEGAL SERVICES LTD

Wills, Trusts & Estate Planning

If you are **OVER 60** it
will only **COST YOU £60***
to make or update your Will.

We are also Lasting Power of
Attorney Specialists - **ONLY £85***
each LPA if instructed during
the Will appointment.

Our prices include home visits and
Inheritance Tax advice.

Property
Protection
Trust

Call us now for a
friendly chat on:
01332 405210

www.kornerstonelegal.co.uk | info@kornerstonelegal.co.uk

19 Kirkhill | Shepshed | LE12 9PA | Freephone: 0800 193 7377 Company Reg No: 11635657.

*Our prices include VAT. These very special rates are only available if you are over 60 years old. Normal price for standard will £125, £195 for two. We also provide Guaranteed Funeral Plans.

Highfields Happy Hens Open Farm, Farm Shop & Tea Room

Open 10am to 5pm Mon to Sat
\$5.50 per person (2yrs and over)
Family & Season Tickets available
Unique Children's Birthday Parties and School Trips
Tuesday is Parent & Toddler Day (term time only) £2.50 each

A truly unique Open Farm experience for all ages

Heage Lane, Etwell, Derby, DE65 6LS www.highfieldshappyhens.co.uk



“ don't miss the
deadline! ”

7 March
Business Adverts

PC-BMI COMPUTER & MEDIA SERVICES

- PC Repairs & Upgrades
- Apple Mac Repairs & Upgrades
- Business Services & Networking
- New PC's & Laptops
- Virus Protection & Removal
- Software & Tuition
- Backups & Data Recovery
- PC Health Checks
- VHS & Slide to DVD Transfer Service



We visit your home or business

www.pc-bmi.co.uk
Tel: 01332 830888 Mobile: 07894 309024

Finding the right solution for you

Quality care and Companionship in the comfort of your own home



Right at Home is one of the UK's
most trusted care companies. Our
local team of friendly, reliable carers
specialise in assisting people who
may need a helping hand with day-
to-day tasks in their own home.

Our services include:

- Companionship
- Transportation and errands
- Meal preparation
- Light housekeeping
- Help with washing, dressing and personal care
- Young adults with disabilities
- Post-operative support
- Holiday and respite cover
- Specialist dementia care
- Managed live-in care



To find out how we can help care for you or your family, call



01332 91 32 32

or visit <http://www.rightathomeUK.co.uk/Derby>
Registered with the Care Quality Commission. Each Right at Home office is independently owned and operated

Toetally Feet

Lisa Bayley MCFHP MAFHP
Home visits Available
Caring for Your Feet!

contact
07894 351701
01332 233916

Quirky Handmade Jewellery



www.artyouwear.co.uk
NOW AT DESIGN@44, Sadler Gate, Derby
facebook: artyouwear

Simply Footcare

Complete Footcare Treatment, Includes the Following:

- Relaxing Footbath
- Ingrowing Toenails Treated
- Nails Cut & Filed
- Hard Skin & Corns Removed
- Feet Smoothed Down
- Foot Cream Applied



Seema Ghai A.I.H.F.P. Foot Health Practitioner
Mobile 07725 546412
enquiries@simplyfootcare.co.uk
www.simplyfootcare.co.uk

Rouge
The Studio

86 Havenbault Lane, Littleover DE23 4AD

Hair Cut, Perm, Colour, Balayage & Ombre

Beauty Facial, Waxing, Gel Polish Manicure, Pedicure & Massage

Free Car Park | Eyebrow Threading £3

Call us on: 01332 512319 / 07735 616992

MATRIX
CERTIFIED STYLIST
10% OAP Discount
NHS & Student Discounts

LITTLEOVER SCHOOL OF DANCE

Ballet, Modern Stage, Tap & Jazz
Classes available for children aged 3yrs and up
Adult classes also available



Monday to Saturday
St. Peter's Hall, Normanton Lane, Littleover

www.littleoverschoolofdance.co.uk
Tel: 01332 273137 / 07866423236

Principal:
Lindsey Stewart
(F.N.A.T.D & Examiner)



Pilates

Exercise Class
Tuesday's 10-11am

Haven Christian Centre,
Heatherton, Littleover

£8 PAYG
£35 for 5

Stretch out
Strengthen
Tone
Relax & meditate

Call or text Susan to Book your place
07812 107684

Alive Pilates

www.alive-fitness.co.uk



BACK PAIN

Are you suffering from low back pain, sciatica, neck or shoulder girdle pain, or an acute whiplash-associated disorder?

Many people are turning to chiropractic for the treatment of these and similar problems.

Treatment is given after a full case history and a thorough examination and aims to improve the function of your muscles and joints.

MJ Whatling, DC, MSc & Associates
LITTLEOVER CHIROPRACTIC CLINIC
(Est. 1988)
569a Burton Road
Littleover
DERBY, DE23 6FW
Tel: 01332 768408
www.littleoverchiropractic.co.uk

CHIROPRACTIC
...so often the answer

Sharp Results Fitness

Kettlebells! FIRST SESSION FREE!

All you need to get Fit, Lean & Toned
Benefits include increased strength for everyday movements and stronger bones.
Only 30 minutes!
Suitable for all ages and abilities!

Monday 10am & 6.30pm	Wednesday 6.45pm & 7.30pm	Thursday 9.30am
-------------------------	------------------------------	--------------------

Trim and Tone
A combination of moves to improve balance, flexibility and tone
Wednesday 8pm (30minutes)

ALL CLASSES IN MICKLEOVER

For more information call Rebecca 07891 512948
or email sharpsresultsfitness@gmail.com
www.sharpsresultsfitness.co.uk
Sharp Results Fitness




DNAFit ANGELICA PT
ACHIEVE YOUR GENETIC POTENTIAL

Does my body respond best to power or endurance exercises?

What is my ideal diet type?

Do I have any sensitivities to carbohydrates, saturated fats, lactose etc



GET TESTED TO FIND OUT THIS & MORE

Get Fit and in shape with us...




PT SESSIONS:
ANGELICA OR KAM
www.angelicapt.co.uk

1 FOR £30
6 FOR £165
12 FOR £275

angelica@angelicapt.co.uk
kam@angelicapt.co.uk
07879494902 | 07791044782

Top tips on getting a new cat

A cat can add great value to family life and is a good pet providing you have the time. There are a few considerations to consider before you collect your new cat.

The most important is will the cat fit in with your family life? While cats don't need walks like dogs, they do need attention and shouldn't be left for long periods of time. If you regularly go on weekend trips or are away from home, consider a pet sitter or putting your cat into a pet hotel.

Be aware that some cats are more affectionate while others prefer their own space. Young children should be taught to allow your cat somewhere to retreat to and to not pick up the cat. This can be very scary and could cause your cat to panic and injure themselves.

Your cat's environment should include: a bed, separate food and water bowls, one litter tray per cat plus one spare, a cat scratching post and toys. Please do not leave food down all day as the food can become stale and your cat will be less likely to eat it.

Another important fact to consider is will your cat be an outdoor cat or indoor cat?

It is recommended to have a full vaccination course for your cat as this is a way of keeping them happy, healthy and protecting them against certain diseases that are often difficult or impossible to treat and can be fatal. Identichips are also important in case your cat gets lost. Other things to consider are neutering, insurance (in case your cat falls ill or has an accident) and routine preventative health treatment.

Book in with your local vet for further advice on diet, health care and more.



Scarsdale Vets, along with many other veterinary practices offer nurse clinics to help get your pet used to visiting the practice as well as giving you the opportunity to talk about preventative healthcare, diet, behaviour and any other questions you may have about your pet.

ScarsdaleVets

FREE pet goody bag
 (if you book before March 31st)

What to expect when you're pet-specting ...

Book a **FREE New Pet Check** for your new dog, cat or rabbit

4 weeks FREE insurance
 (for dogs and cats under 12 months)

Mickleover Practice, 73 Devonshire Drive, Mickleover, Derby DE3 9HD
 01332 518585
scarsdalevets.com/petspecting

Dog lovers wanted

Join our local host community

Companionship, friendship and fun are guaranteed!

- Dogs to suit your lifestyle
- Completely flexible
- Trial stays to ensure compatibility
- Full support and advice
- A playmate for your own dog

Barking Mad

Happy Dog. Happy Holiday. Happy You.

Twitter Facebook **BarkingMad.uk.com** TRUSTPILOT
01332 650232

PetStay

A Loving & Caring Alternative to Kennels

Are you a Dog Lover?

We're looking for dog lovers to join our team of carers and board dogs in their own home

Are you at home during the day or the weekend?
 Do you have a very secure garden?
 Do you love dogs?
 Love walking?
 Good for your health and very sociable
 Receive up to £148 per week

01332 489689
chris@petstay.net
07973 912539
www.petstay.net

SCAMPS & CHAMPS

Dog Walking & Pet Care Services

The Derby branch of Scamps and Champs are looking for dog home boarders to look after dogs in their own homes whilst their owners are on holiday. We offer a real alternative to traditional kennels and we are looking for new hosts to add to our team.

You must:

- Have a secure garden.
- Be at home for most of the day, so would suit a retired person, someone who already works from home, or a stay at home parent. The dogs cannot be left for longer than 2-3 hours.
- Have no children under 5 living with you.
- Love dogs, animals, the outdoors and walking.
- Have past experience of pet care, working with animals or own or have owned your own dog.

You will need to have a mobile telephone and access to the internet in order to accept assignments, check your diary on our online software etc. You will be covered under our Dog Home Boarders arrangers licence by the local Council and fully insured for any bookings made through us. In return you will receive £81.90 per week for 1 dog boarded with you or £123.90 per week for 2 dogs boarded with you. We only ever board dogs from the same family together and you would get to meet the dogs and their owner prior to accepting a booking. This is a self-employed home-based position. It offers great flexibility and can fit around your lifestyle. It is also great for someone who doesn't want the full commitment of dog ownership but would still like dogs in their life in some way.

We would love to hear from you.
 Call 0333 200 5827 or email derby@scampsandchamps.co.uk



Village News

March 2019

Our Village News pages are for any activities and groups held within our delivery area. Our What's On pages are for activities in the wider Ashbourne and Derby area. Please send any entries to villagenews@warwickdirectories.co.uk by the deadline date for inclusion in next months magazine.

Littleover WI

Meets monthly on the 2nd Thursday (except August) in St Peter's Church Hall on Normanton Lane, Littleover at 7.30pm. We have interesting events and speakers.

14th March – Winters of Derby will talk about their photographic archive.

We also have knitting, book & drama groups, lunch outings & trips and are open to women of all ages with the 1st three meetings being free.

Karan Tuxford 01332 516861.

Yew Tree Women's Institute

Meet on the 2nd Wednesday of each month at Grange Hall (rear entrance) 10am to 12pm. Our programme of speakers and events is varied and all ladies are very welcome.

13th March – Philip Shore – Helping Fairtrade farmers trade their way out of poverty.

Angela Peake 01332 363664.

Littleover Tennis Club

Is a small friendly Tennis Club in Littleover (40 Eastwood Drive, DE23 6BN) with coaching available for all ages & abilities. New members are welcome for social and team tennis.

www.littleovertennis.co.uk.

Littleover in Bloom

11th March – our next meeting is at 7pm at Littleover Grange Hall Community Centre, Park Lane.



16th March – Annual Bulb Sale from 10am to 12 noon. Buy your potted bulbs nice and early ready for mothering on Sunday 24th March. We will be in our usual spot in the Half Moon car park, this year hopefully it will be dry!

This year we made the decision to grow some of our plants from seed, we have a good start as we have received a good donation of seeds from Sunningdale allotments. However, we only have limited greenhouse space, so if anyone can offer us a corner of their greenhouse and babysit some seedlings, then please let us know.

Jan 01332 348903 / jan.dante@virgin.net.

Littleover Historical Society

We hope to be continuing with our Littleover boundaries project very soon, from researching various maps we have established some boundary lines, but not all. Littleover has experienced several boundary changes over the years as most urban communities have. One local resident, Colonel George Gascoyne, was successful in his fight to prevent Littleover from being drawn in to the Borough of Derby in 1901, sadly only for a few years. Colonel Gascoyne is buried in St. Peter's Churchyard. Previously the Toll House on the right-hand side going down Burton Road from Littleover, roughly in between Whittacker Gardens and Vicarage Road was the boundary line.

8th March – our next meeting at 10am at Littleover Grange Hall, Park Lane, rear entrance. Visitors welcome, £3 including refreshments; members £1.

Jan 01332 348903 / jan.dante@virgin.net.

Littleover Ladies' Phoenix Circle

Meet on the 2nd and 4th Thursday each month in the Grange Hall (rear entrance) 2 to 4pm. All ladies welcome. We have a varied programme of speakers and events throughout the year.

14th March – David Down – My Work with the Ministry of Agriculture

28th March – Nancy Hawsworth – Cookery Demonstration

Margaret Storry 01332 766916.

Come and join us to celebrate

MOTHERING SUNDAY

at St Peter's Church Littleover
Sunday 31 March 10am

a great way to
say thank you
and to
remember
your mum

x x



St Peter's Church Church Street Littleover Derby DE23 6GF

Tel: 01332 767802

Web: www.stpeterlittleover.org.uk

Vicar: Revd Alicia Dring



“ don't miss the
deadline! ”

4 March

Village News & Classifieds

GET NOTICED
ADVERTISE WITH US

CALL
01332 416 242



DERBY GRAMMAR SCHOOL'S

SPRING MARKET

FOOD | HOME | GIFT

Saturday 16 March • 10am–3pm

Browse beautiful products from designer-makers and artisan food producers.

Adults £1 • Children free • Free parking



Derby
Grammar
School

Parent Teacher Association

derbygrammar.org/springmarket

Littleover, Derby DE23 4BX

Local Church Events

Littleover Baptist Church

We celebrated our 206th anniversary on 10th February. It was a joyous time, tinged with sadness as we reflected on the good times we have had with our Minister Ben Gotts and his wife, Clare and two boys. An enjoyable lunch followed the service at which Ben was presented with a leaving gift. We wish Ben, Clare, Samuel and Joshua God's blessing on their new adventure. As for us left behind, we pray that God will lead us to a fruitful future. All the usual weekly events continue.

Brownies: now Mondays at 5.30pm. Guides: Mondays at 7pm. Daniel's Den: Parents & Tots Group on Tuesdays at 9.45am. Discussion Group: Thursday at 8pm. Rainbows: Fridays at 5.45pm

6th March - Pancake Day - join us sometime between 11.30am and 2pm and enjoy lunch of savoury or sweet pancakes and a cup of tea/coffee. Parents and children will be equally welcome.

Sunday Worship Services - 10.30am every Sunday at the Church on Thornhill Road, Littleover, DE23 6FZ.

Paul 07983 650957 / www.littleoverbaptists.org.

Littleover Methodist Church

Sunday Church Services - 10.30am, Morning Service / 6pm, Encounter at the Church on Constable Drive, DE23 6EP. All welcome.

Activities throughout the week for children, young people, older folk and anyone in between!

2nd March & 6th April - 10am to 12noon, Messy Church. A morning of activities, games and crafts. At 12noon we share a light lunch. Messy Church is free. All ages are welcome; children must be accompanied by an adult.

Activities throughout the week for children, young people, older folk and anyone in between!

10th March - 10.30am, Church Parade - All Age Service

LMC Café: 9.30am to 1.30pm, Wednesdays, Thursdays & Fridays serving a selection of homemade cakes, drinks, sandwiches, jacket potatoes and snacks at reasonable prices, all welcome.

Advanced notice: **15th to 18th April** - mornings, Holiday Club; details from Church.

www.lmclife.org.uk / FB: @

LittleoverMethodistChurch / Twitter: @lmclife.

Haven Christian Centre

Sunday Worship Services - 10.30am Communion Services on the 2nd & 4th Sundays, All Age Worship on the 3rd Sunday. All are welcome to the Centre, Hollybrook Road. Heatherton. DE23 3TZ

9th March - Quiz and Fish & Chip Supper evening at 7pm; tickets and more information from Martin on 07941 784244

Children's Church - for 11 year olds and under, every Sunday except All Age Services when the children stay with their families to worship together;

Lunch Club - 12.15pm every Monday at the Hollybrook Inn; catering for those who like good company and good food. 2-course lunch for £6, pre-booking required.

Knit & Knatter - 10.30am every Tuesday morning, to knit and chat!

Haven Under 5's - 9.30am every Wednesday; play and crafts for the under 5's; tea & coffee plus a bit of chatting for parents, grandparents or guardians!

Silverlinks - 2pm every Thursday afternoon; a fun afternoon for the over 60's with a varied programme of activities including refreshments

Haven Babies - A time for Babies under the age of two to explore and have fun, every Friday morning, 10am.

#Fun@TheHaven - fun events for all ages that we get up to periodically that may include games, film shows, quizzes, food etc

www.havencc.co.uk / FB @HavenChristianCentre / revmpk@gmail.com / 01303 519707.

Newmount Methodist Church, Blagreaves Lane, Littleover

Sunbeams Parent and Toddler Group: Wednesdays from 9.30 to 11am, £1.50 (term time only)

King's Kids - Thursdays 6 to 7.15pm, free (term time only). Bible story, games & crafts for 5-11yrs.

30th January - 3pm, Family Film Fun, free (including popcorn and ice-cream)

07786 751846 / susan@newmount.net



Wine: A Time for Sparkling

For a celebration, occasion, event, festive fizz, or simply regular dining, there are plenty of choices for sparkling wines.

Many countries, worldwide, produce different styles and flavours - in fact, something for every taste and palate.

For this quest I searched for a retailer that included a range of sparkling wines within their shelves - some that are great for everyday dining and also others that would be most acceptable for celebrations and events.

Firstly, **Extra Special Asti** (Grapes: Moscato). This classic, sweeter sparkling wine, originates from the town of Asti, in the Piedmont region of Italy. Extremely popular and really fabulous to accompany summer fruits, it is also an all year round pleaser. Amongst other sparkling wines prosecco is a further tried and trusted favourite, for many.

Fillipo Sansovino Millesimato Prosecco (Grapes: Glera) I found to be excellent, from the pleasant bouquet through the refreshing mouthfeel and palate. This is, again, another very popular, Italian production. Perfect for pre dining drinks, too.

Marques Del Norte Cava (Spain) has plenty of appeal, especially to cava devotees and utilises Macabeo, Xarel-lo and Parellada grape varieties, to great advantage. Much enjoyed, for many dining occasions, this is a good choice and highly popular.

Solato Lambrusco (Italy) is a red wine with a slight sparkle. Adding colour to any dining table this is produced using Lambrusco Salamino and Lambrusco Marani grapes. Aromatic and very good to accompany a lot of cuisine, including meat dishes, this is another Italian classic, for easy drinking.

Louvel Fontaine Champagne has a fruity bouquet and excellent perlage, which leads, enticingly, to the mouth's pleasures and splendid sensation. The extended palate adds to the delights of this impressive French, rose-coloured production (Grapes: Pinot Noir, Pinot Meunier), which brings elegance and sophistication to any dining occasion or event.

These are just a selection that I located at an Asda store, where I found excellent value wines and drinks, with several award-winning productions amongst their extensive ranges. Advice is always available, on all aspects, including food pairings. www.asda.com.

Derby German

Is a group of German speakers, native and non-native, with a shared interest in or connection to the German language. A monthly 'Kaffee u.Kuchen' get together is held in Derby and other events organised having a connection to a German speaking country or the language. No need to be a fluent speaker but at least a basic understanding of the language would be helpful. New members always welcome; join us at one of our upcoming events. Wir freuen uns auf Euch!

[derbygermangroup.wordpress.com /](http://derbygermangroup.wordpress.com/)
[derbygermangroup@gmail.com.](mailto:derbygermangroup@gmail.com)

Derby Circle Dancing Group

Meet at the Friends' Meeting House, St Helen's Street, in Derby on the 4th Monday of each month (except Dec) 7.30 to 9.30pm to enjoy traditional and modern dances from all over the world. Anyone of any age can circle dance; you don't need a partner and steps are clearly taught before each dance with beginners always welcome. Cost: £4.50 - £2.50 (self-select).

Jane 01332 766766 / 07930 435045.

Take Heart (Derby)

Take Heart (Derby) is a registered charity and social support group for heart patients and their families. It is affiliated to the British Heart Foundation

1st, 8th, 15th, 22nd & 29th March - 'Singing for Fun' from 10am to 12noon at St John's Church, Birchover Way, Allestree, Derby DE22 2QL. Lift your spirits with Trisha Flude. We could do with a few more male voices to join in. Don't be shy- give it a try.

6th, 13th, 20th & 27th March - we encourage members to attend the family pool at Queens Leisure Centre, Cathedral Road, Derby, DE1 3PA from 3 to 4pm for a healthy swim with other group members.

11th March - the speaker at our monthly meeting will be Bob Massey inviting us to join him for 'The Cup that Cheers'. This will be at The Friends Meeting House on St Helens Street, Derby, DE1 3GY from 2.30pm. Guests are very welcome to attend.

19th March - we meet for an informal lunch at The Jonty Farmer, Kedleston Road, Derby DE22 1FT

Turn up for a meal and a chat and avoid having to wash the dishes.

26th March - we meet at 10.30am at The Cube/Deda building, Chapel Steet, Derby, DE1 3GU (opposite the multi storey car park) for a warm drink and chat and

even one of their famous bacon butties. This is always a very popular event, giving members plenty of chance to chat.

Chairman Michael Flude 01332 380219 / Michael.flude@takeheart.derby.co.uk / www.takeheartderby.co.uk.

Pastures Company of Archers, Mickleover

Did you miss our January Have a Go session?

15th March - we are running another session and have Beginners' Courses coming up in the Summer. To find out more visit:

[pasturesarchers.co.uk /](http://pasturesarchers.co.uk/) info@pasturesarchers.co.uk.

Derby A Cappella

The Human Voice - that is all you hear from Derby A Cappella since we sing in close harmony without musical accompaniment. If you would like us to sing at an event in 2019, or would like to come along and sing with us please contact undersigned. We rehearse every Tuesday evening at Chester Green Community Centre, City Road, DE1 3SA from 7.30 to 10pm.

Gordon 01332 518594 / gordonsavage@yahoo.co.uk / [www.derbyacappella.co.uk /](http://www.derbyacappella.co.uk/) www.facebook.com/derbyacappella/.

Spring is in the air!!

So spring into action and apply to take part in the Dalesmen Music Competition before the closing date of 6th April 2019. The award is open for competition to all students who are resident and/or educated in Derbyshire, and who are in Year 12 or Year 13. It is expected that applicants will be at the standard of Grade 7 or above on their chosen instrument/voice. We can provide an accompanist for students whose usual accompanist is unavailable on the day

All information and application forms are available in the 'Student Competition' section of the Dalesmen website. Applicants will receive an acknowledgement by email. If this fails to arrive, or more information is required please contact:

[www.dalesmen.org /](http://www.dalesmen.org/) dmvcstudentaward@gmail.com.

Derbyshire Country Link

Is a friendly and informal group of people sharing an active interest in the Countryside. If you would like to make new friends and get out into the countryside, then you are warmly welcome to join us at our

meetings.

15th March - Maria's House Warming

29th March to 1st - Mad March Weekend at Whitby
Call one of the organisers before an event, so that we can look out for you and for any final details about the arrangements

Liz 07702 095649 / lizabethjg@yahoo.co.uk or Andy jordan111@btinternet.com / www.country-link.org.uk.

Derby Wine Circle

Meets monthly on the 1st Friday at 7.15 for 7.45pm at The Evergreen Club, Cornhill, Allestree unless otherwise stated.

1st March - '19th Century Derby's Whitechapel' with guest speaker Jane Whitaker

5th April - 'Dry stone walling' with guest speaker Andrew Brown-Jackson

Further planned activities include a Rolls Royce Heritage Tour with option of lunch and a tour of the Victorian Hall in Nottingham with an option of a Council House tour / Bronnley Library.

Fees: £16 annual subscription per member paid at the March meeting; members joining mid financial year are charged pro-rata; guests £3 per visit (offset against future annual subscription). Guests to bring a drink and glass, cheese & biscuits provided.

[julie@thebelks.plus.com /](mailto:julie@thebelks.plus.com) 0115 9328217 / [gillian.wall@ntlworld.com /](mailto:gillian.wall@ntlworld.com) 01332 551447.

Derby Welsh Learners Circle

2nd March - monthly Welsh language workshop from 9.30am to 12.30pm at Derby Friends Meeting House, St Helens Street, Derby. All welcome, whether beginners or fluent speakers. Croeso i bawb!

www.derbywelshlearnerscircle.blogspot.com.

Craft & Table Top Sale

30th March - at St John's Church Hall, Devonshire Drive, Mickleover from 10am to 2pm. Refreshments, cake stall, books & jigsaws.

01332 510809 / 01332 515293 / treasurer@stjohnsmickleover.org.uk.

Cats Protection - It's Time to Neuter/Spay your Cat

Cats can be spayed from 4/5 months old. However if you are on a low income, the Derby & District Branch's cost assisted neutering scheme costing only £10 per cat covers neutering/spaying ONLY plus an injection of pain relief. Any further treatment (flea/worming, extra

pain relief, buster collar etc) will have to be paid for by yourself. You are eligible for cost assisted neutering / spaying if you receive any of the following benefits: Income Support / Employment & Support Allowance (ESA) / Housing Benefit / Council Tax Benefit / Income-based Jobseekers' Allowance / Working Tax Credit (with exemption card) / Child Tax Credit (with exemption card) / Pension Credit / Student.

Catline 01332 206956 / enquiries@derbybranch.cats.org.uk.

The International Friendship League

Meets at 2.15 for a 2.30pm start at the rear of Grange Hall, Park Lane, Littleover, Derby.

11th March - Slide show with Sandra Henchcliffe.

Diane Bannerman 01332 741234.

Derby Poetry Society

8th March - Derek Palmer, long standing Member of the Society and retired academic, will give a talk on whether or not Poets' biographies are relevant to their work. All welcome at 7.30pm at Friends Meeting House, St. Helen's Street, Derby, DE1 3GY.

01332 554926.

Derby South Probus Club

We are a group of retired professional/business people who meet on the 3rd Monday of each month at The Grange, Burton Road, Littleover, DE23 6XX. We meet at 12.15pm for conversation and friendship followed by a lunch at 12.45pm and then a guest speaker.

18th March - speaker C Welford - 'Living with the Italians'

Tel: John Toplis (Secretary) 01332 771054.

Derby Folk Dance Group

Meets monthly on the 2nd and 4th Mondays from 7.30pm (excluding Bank Holidays and August) for English Country Dancing at St Michaels Church Hall, Elvaston Lane, Alvaston, Derby DE24 0PU. All welcome.

01332 702386.

Spring Plant Hunters' Fair at Carsington Water

16th March - from 10am to 4pm at Carsington Water, Big Lane, Ashbourne, Derbyshire, DE6 1ST. Free entry to Plant Fair & Country Park (charge to park). It's a great time to get out in the garden and get planning and planting for the year ahead and where better to get inspiration than at a Plant Hunters Fair. The plants are lovingly grown by specialist nurseries who will bring a great range of perennials, shrubs, trees, rare species and old heritage varieties for a wide range of

garden situations from hot sun to cool shade. These enthusiastic plants people are on hand to give honest, straightforward advice on choosing and growing the right plants for your garden. The plant fair offers the opportunity to pop along and visit many specialist nurseries from across the country to get your gardening season off to a great start.

For full details of nurseries attending go to:
www.planthuntersfairs.co.uk.

Derbyshire Wildlife Trust – West Derby Group

28th March – 7.30pm, 'Kiwi Adventure – Land of the Big White Cloud' – Mike Davey will take us on a trip by campervan around the southern part of the South Island of New Zealand from Christchurch to Dunedin, through wilderness areas with beautiful scenery of lakes, mountains, deserted beaches, flowers, wildlife and ever changing skies.

Meet at 7.30pm at St Peter's Church Hall, Shepherd Street, Littleover, DE23 6GF. Members & visitors welcome. Entrance £2.

01332 511825 / 01332 511381.

Gem Connection

The ladies are now currently rehearsing hard for their forthcoming trip to Calpe in Spain where they will be representing LABBS (Ladies Association British Barbershop Singers) and Great Britain by competing in the Spanish Barbershop Convention.

21st March – Open Evening for family and friends to showcase our competition package at Harrington Middle School, Derby Road, Long Eaton at 7.30pm.
www.gemconnection.org.

Derbyshire Branch of the Embroiders' Guild

9th March – (10.30am – 4.30pm) 10.30am Refreshments, 11am notices. A talk by Judith Rowley – My Creative Journey and Judith will lead a workshop on Kantha Cards in the afternoon. Meeting is held at St Mary's Church Hall, Darley Lane, Derby DE1 3AX. Visitors most welcome.

01773 835995 / www.emreg.org.uk/branches/derbyshire.

Rolls-Royce Retired Employees Association

5th March – the Walk & Talk Group will do a walk round Shardlow, meeting at the Clock carpark at 10am. We will also be having lunch there.

12th March – Association Members meet at Rolls-Royce Leisure, Moor Lane, Derby at 1pm.

13th March – Association Members' coach trip to the Trafford Centre, Manchester.

26th March – Tea Dance at Rolls-Royce Leisure, Moor Lane, Derby from 2pm to 4.30pm.

Sheila Furniss 01332 516744 / Pat Neal 0116 2106917.

Birdwatching for Beginners Walks at Carsington Water

Regulars will know we now have our Great Northern Diver returned to the reservoir for its annual winter holiday.

3rd March – join our next walk for a chance of seeing this impressive bird along with other winter visitors, notably ducks and continental thrushes, plus the numerous resident birds that make Carsington Water their home. And don't worry if you're completely new to the pastime; you'll have experienced birders on hand to help you identify the birds, some of which you may spot in your garden and want to be sure what you're seeing. Call the Visitor Centre on the number below to book your free place on this or future walks, which invariably take place on the 1st Sunday of each month, from 10am to 12noon. Wrap up well and wear sensible shoes/boots as sections of the walk can be muddy ... and don't forget your binoculars! Happy birding.

Visitor Centre 0330 6780701.

Derby Focus Activities Club

Are you are 40+ and enjoy walking, dancing, meals and other social activities? We meet on the 2nd & 4th Wednesday of each month at The Flower Pot on the corner of King Street & Chapel Street to, socialise, meet new friends and to discuss upcoming events. If you think this is for you call or meet us there at 8.30pm.
Wallace 07711 250640 / www.derbyfocus.org.uk.

Derby Natural History Society

Meet at the Evergreen Hall, Cornhill, Allestree, Derby at 7.15pm

8th March – an Illustrated talk by Steve Ford on 'Victoria Falls & Botswana'. Follows a brief AGM. Visitors & guests are welcome. Entrance for non-members £2.

www.dnhs.org.uk.

The Listen Hear Support Group

14th March – Eileen Strong will give a talk on 'Quantum Touch'.

Venue: the Residents Common Room of the Guinness Partnership 1a Sidney Street from 1 to 3pm. New members are always welcome to the meetings.

Ansuya 07817 412918 / Francis 01332 290956.

Derby Organ & Keyboard Club

25th March – Jon Smith will be appearing at 7.30pm at St George's Social Club, Village Street, Derby DE23 8SZ. Admission: £6/ members & members of other clubs; £7.50/visitors. Music pupils & children under the age of 18 free when accompanied by an adult.
www.organfax.co.uk/clubs/derby.

Derby French Circle (Cercle Français De Derby)

Meets at St Edmund's Church Hall, Kings Croft, Allestree, Derby DE22 2FN on the Friday evenings below, from 7.15pm. Talks, social and cultural events. Come and join us for conversation and games in French; all levels of French spoken.

1st March – 'Lesser known Paris' – a talk by Vincent Raymond-Barker

15th March – a talk in English about French glass – 'Lalique, Baccarat, Galle' by Sonia Jackson

29th March – 'From the river Creuse to the Moselle on a bike, a treasure of discovery far from the beaten track' – a talk by Maryse Wright.

Students £3 & visitors £7 per meeting, season ticket £40.

www.derbyfrenchcircle.org.uk.

SSAFA

Is the UK's oldest Armed Forces Charity, established in 1885. If you would like to volunteer and help in Derbyshire with Fundraising, Casework, Awareness Events, Befriending, we'd love to hear from you.

Contact us on: 01773 828116 / www.ssafa.org.
uk / derbyshiressafa@btconnect.com / FB: SSAFA Derbyshire / Twitter: @SSAFADerbyshire.

British Cactus and Succulent Society (Derby Branch)

Been given a Cactus or Succulent or treated yourself to one recently and unsure how to care for it? Then come along to one of our friendly meetings at Mickleover Community Pavilion, Vicarage Road, Mickleover, Derby, DE3 0ED. You don't even need to be a member of the Society – simply turn-up and you'll be made most welcome.

5th March – Cyclamen in the wild and in cultivation (David Charlton)

2nd April – Hardy Succulents (Ray Stevenson)

Entry: £3 / u18's £1, free raffle, plants for sale and on display plus refreshments.

David Gibbons 01332 510228, david.s.gibbons@gmail.com / John Mills 01335 370189 or 07973 750620.

Vacancy – Conductor / Musical Director

Living Faith Choir is an Ecumenical Christian Choir which meets on a Thursday Evening at Mickleover Methodist Church. We are looking for a Conductor/ Musical Director to lead us forward in 2019.

Anne 01773 852938 / Gillian/Peter 01332 551090.

Derby Concert Orchestra

9th March – Concert at 7pm at Derby Cathedral, DE1 3GP. Programme includes: Lyadov – The Enchanted Lake; Stravinsky – The Fairy's Kiss; Rachmaninov – Symphony No.2. Tickets: Adults £14 (£12 students & concessions), u18's free with an adult, available from:

Foulds Music / Orchestra Members / on the door / www.derbyconcertorchestra.co.uk.

Soroptimist International

Meet at 7pm on the 1st Thursday of the month at The Sleep Inn behind the King's Highway pub, DE22 3NH. Membership of Soroptimist International appeals to any woman with a social conscience, who wishes to make a difference to the lives of women and girls at home and around the world through education, empowerment and enabling opportunities.

7th March – update on our project to make Derby a Toilet Twinned City, see <https://www.toilettwinning.org/>. If you run a business in Derby and wish to be part of this please contact us.

9th March – we will also be fundraising for Toilet Twinning at the International Women's Day event

4th April – this meeting will be our AGM

www.sigbi.org/derby / soropsderby@gmail.com / FB.

Derby RSPB Local Group

13th March – we welcome Paul Hobson with a talk on 'Urban Wildlife'. We meet at 7.30pm in the Grange Banqueting Suite, 457 Burton Road, Littleover, Derby, DE23 6XX. Admission for members is £2, for non-members £2.50 and juniors £1.

24th March – free birdwatching walk at Wollaton Park, Nottingham. Meet in the upper car park, near the Hall at 9.30am. We hope to see woodland and water birds. Toilets and cafe on site, the walk should finish at about 12.30pm.

www.rspb.org.uk/groups/derby.

Derby South Probus Club

We are a group of retired professional/business people who meet on the 3rd Monday of each month at The Grange, Burton Road, Littleover, DE23 6XX. We meet at 12:15pm for conversation and friendship followed by a

lunch at 12:45pm and then a guest speaker.

18th March – speaker C Welford on 'Living with the Italians'

Secretary, John Toplis 01332 771054.

Derby & District National Trust Members' Group

Is a friendly and vibrant group run by members, whose aim is to promote the National Trust and local properties. We meet at Landau Forte College, Fox Street, Derby with talks starting at 7.30pm, with a variety of enjoyable social events organised throughout the year. Group members £2.50 / visitors £5. Non-members very welcome.

19th March – a short AGM at 7pm will be followed by a talk by Eric Boulton on the 'Ecclesbourne Railway'. This includes the origins and history of the railway line from Duffield to Wirksworth and its demise; then its rebirth into the enterprise it is today thanks to a fantastic team of volunteers.

Membership Secretary 01332 703512 / derby.members@nationaltrust.org.

Children First Derby

22nd March – Annual Charity Fashion Show at The Riverside Centre, Pride Park, Derby, hosted by BBC Radio

Derby Presenter Twiggy. Tickets: £25 includes sparkling reception drink, buffet, Fashion Show, DJ & dancing afterwards.

Gina Repton 01332 341516 / gina.repton@childrenfirstderby.co.uk.

Little Chester Local History Group

21st March – join us at 7.30pm in Chester Green Community Centre, Old Chester Road, Derby when Judy Colby will talk to us about her experiences in the theatre in 'From Rags to Riches - Wardrobe Mistress' – theatrical miracles? Admission non-members £2. 01332 559615.

Normanton-by-Derby Local History Group

A small friendly group interested in the history of the area and beyond meets September to April (except December) on the 4th Wednesday of the month at St. Giles' Centre, Village Street, Normanton at 2.30pm. Cost: £7 (season's membership) / £2 per meeting for visitors inc. refreshments.

27th March – 'When Mat met Mel', a talk about The Ordnance Survey given by Rod Pearson. Come along and join us to discover all about this intriguing title.

01332 765864.

GET NOTICED ADVERTISE WITH US

CALL 01332 416 242

Local Church Events

St. Thomas' Road Methodist Church, St Thomas Road, Derby, DE23 8RL

2nd March & 6th April – our next coffee morning from 10am to 11.30am. All welcome. 01332 768591

St John the Evangelist

2nd March – 10am to 12noon, Saturday 'Drop-In', coffee and chat, free admission

3rd March – 9.45am Morning Prayer / 4.30pm Evensong

5th March – 6.30pm Shrove Tuesday Pancake and Praise

6th March – 12noon Ash Wednesday Communion with Ashing / 7.30pm Sung Eucharist with Ashing
10th March – 9.45am Family Communion / 4.30pm Evensong

13th March – 2.30pm Community Tea. All welcome. Free admission

17th March – 9.45am Family Communion / 4.30pm Evensong

19th March – 7pm Join us for our Iona Celtic Worship Service

24th March – 9.45am Family Eucharist / 4.30pm Evensong

26th March – 7pm Film Night. Free admission. Watch followed by lighthearted discussion

31st March – 9.45am Mothering Sunday, Family Eucharist and flower distribution / 6.30pm Evensong

6th April – 10am Saturday Drop-In. All welcome Located on Mill/Bridge Street, Derby, DE1 1DY, the church is open Tuesdays, Wednesdays & Thursdays from 4.30 – 6pm with evening prayer said at approx. 5.15pm. The garden provides a quiet space with benches for those around who may want to eat their lunch away from the office.

Vicar Canon Elaine Jones / www.stjohnsmillstreet.org / canonelaine@gmail.com

Church to Church Walks & Talks

16th March – looking at diversity within Christianity.

10am, at St Mary's (Roman Catholicism)

11am, at the Bridge Chapel (Orthodoxy)

12noon, at Central United Reformed Church (Protestantism)

Join when and where you like .. all welcome, free of charge.

mfc@derby.ac.uk / 01332 591285 / www.multifaithcentre.org





Give your kitchen a stylish new look without going through all the disruption of ripping out your old one. Our bespoke worktops and replacement doors are made to cover existing surfaces precisely, leaving a hardwearing and luxurious finish. Our skilled team can often transform your kitchen in as little as a day.

To find out more or book a free home visit, contact

DERBY SHOWROOM: 01332 912 952
Unit 6a, Centurion Way Business Park,
Alfreton Rd, Derby DE21 4AY

granitetransformations.co.uk

GRANITE
transformations
KITCHEN & BATHROOM MAKEOVERS

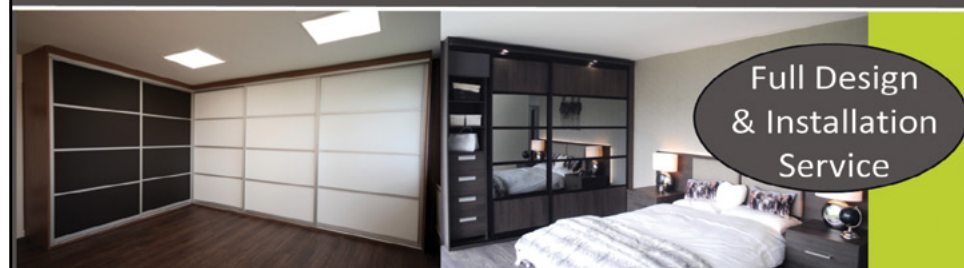


GLIDEROBES

Made to Measure Sliding Door Wardrobes



CUSTOM SLIDING WARDROBES MADE TO MEASURE DIRECT FROM THE MANUFACTURER



DIY Wardrobe Kits Available

Visit our website and design your own made to measure wardrobe for self-installation

VIEW OUR EXTENSIVE GALLERY @
www.gliderobes.co.uk

Or Visit Our **SHOWROOM**

Unit 4, Charity Road, Amber Business Centre,
Riddings, Alfreton, DE55 4BR

Telephone: 01773 600040

email: sales@gliderobes.co.uk



Monday-Friday 9am-5pm
Saturday 10am-4pm

"We also carry an abundance of gifts and occasional pieces"

Our huge showroom boasts 10 rooms of exciting furniture plus, on our first floor, 7 stunning bedroom displays

STOCK CLEARANCE SALE NOW ON!



Made in
The Midlands



Made in
The Midlands



Bookcases Made to Measure in all Shapes and Sizes

Made in
Derby



Made in
Derby

We Also Fit:

Kitchens, Bedrooms & Studies

Made to Measure a Pleasure
Just bring in your measurements and we can give you a Free Quote

Shop Local

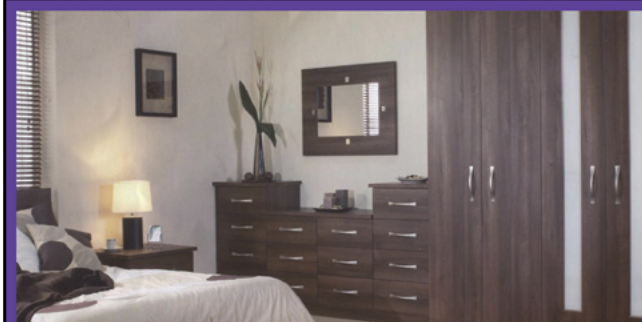
FINWOOD STUDIOS

Trusted Family Business
Established 1976

We deliver and install our larger items FREE locally, including Saturdays
2 - 8 Station Road, Mickleover Tel: 01332 510445

www.finewoodstudios.co.uk

Closed Wednesdays | Parking Outside | Major Credit Cards Accepted



We Make Our Furniture To Fit Your Bedroom

Showroom open Tuesday to Saturday

Why choose us?

- Truly Made to Measure • Quality at Affordable Prices
- Free Expert Design Service • No Obligation Quotations
- Local Family Business • Established for Over 35 Years
- Experienced In-House Fitting Teams • Quality Sliding Robes
- Thousands of Happy Customers

HARMONY INTERIORS (UK) LTD



01332 381 945

www.harmonyinteriors.co.uk

118 Peet Street, Derby, DE22 3RG

SAVE up to 40%
on the cost of a full replacement kitchen.

With a kitchen makeover from Dream Doors

- Trusted reputation
- FREE design, planning & installation
- 50% deposit, balance on completion
- Huge range of doors, worktops, appliances, sinks & taps



Call Steve for your FREE survey & quote on: 01332 290600

Visit our new showroom at:
20 The Strand, Derby, DE1 1BE
www.dreamdoors.co.uk

DREAM DOORS®

NEW LIFE FOR OLD KITCHENS

EST. 1999

Checkatrade.com
Where reputation matters



EXCLUSIVE
OFFERS
AVAILABLE

Beautiful new homes in Derby. Let's get moving.

*the place to be**

Highfields, Littleover, DE23 4AP 3, 4 & 5 bedroom homes from £197,000

Get moving to our beautiful Highfields development in Littleover, which benefits from excellent transport links into Derby and a peaceful ambience. Our two phases are set amongst beautiful countryside yet only four miles from the city, these homes offer the best of both worlds.

Give us a call today on 03330 601 271 to find out more, or visit our showhome and marketing suite. Open daily, from 10.30am to 5.30pm.



Plot 958 – Morley

3 bedroom home for £215,000

Reserve this home in January and we'll give you **£2,000 towards Stamp Duty***.



Plot 1056 – Repton

4 bedroom home for £327,000

With **Part Exchange†** available on this home, you could swap your old house for a brand new Miller home.

03330 601 271 | www.millerhomes.co.uk



millerhomes

†Part Exchange is subject to availability, status and eligibility. Your present home must meet certain basic qualifying criteria and be of a lesser value to be eligible for Part Exchange. 100% market value based upon valuations obtained by appointed scheme surveyors. Terms and conditions apply.

*Offers are subject to Miller Homes' standard terms and conditions and cannot be used in conjunction with any other offer or exchange for cash. Price and availability correct at time of going to print. Photography and CGI represents a typical Miller Homes exterior. Carpets and floor coverings are not included in our homes as standard.

What's Hiding in... **My Bedroom** This Month?

FREE FITTING*
Derby's Biggest & Best Choice

SLIDING DOORS
3 Door Run
Storage & Hanging
From £1500
!FREE FITTING!

20% Off

APPLIANCE WAREHOUSE NOW OPEN

David Curd's KITCHEN & BEDROOM WAREHOUSE
www.mykitchen.bargains
T: 200992
36 Canal Street Derby DE1 2RJ

TRUSTED TRADER

Deluxe Window Cleaning
Your Local Window Cleaner
Contact Sean on: 01332 202027 / 07955 827146

Before **After**

OUR SERVICES

- Window Cleaning
- Conservatory Cleaning
- Fascia & Soffit Cleaning
- Gutter Clearing

TRUSTED TRADER

www.deluxewindowcleaningderby.co.uk
derbywindowcleaning@hotmail.com

Paul Bagley

Experienced
Painters & Decorators
Interior and Exterior



- Established 1985
- Free Estimates

Mobile:
07723 067736
Telephone:
01332 273257

What's Cooking in... **My Kitchen** This Month?

FREE FITTING*
Derby's Best Value Since 1998

Massive Stock Appliance Sale
60% OFF BOSCH FRIDGES
Check Website

Derby's Biggest & Best Choice

APPLIANCE WAREHOUSE NOW OPEN

David Curd's KITCHEN & BEDROOM WAREHOUSE
www.mykitchen.bargains
T: 200992
36 Canal Street Derby DE1 2RJ

TRUSTED TRADER

HOWARTH *at home*

FREE

Neff Slide & Hide Oven
with your
Laura Ashley Kitchen

Quote Warwick1. T&Cs apply. Single Oven only. Kitchen value must be over £7k inc VAT

NEFF
COOKING PASSION SINCE 1877

LAURA ASHLEY
KITCHENS AND FITTED BEDROOMS

Pentagon Island Timber Yard,
12 Old Nottingham Rd, Stores Rd,
Derby, DE1 3QT
tel: 01332 360233

Mon-Thu 7am-5pm | Fri 7am-4pm | Sat 8am-12midday

LET'S CREATE SOMETHING SPECIAL
HowarthAtHome.co.uk

Howarth At Home is part of Howarth Timber Building Supplies

OVER **175** YEARS IN THE MAKING



MICKLEOVER BATHROOMS INSTALLATIONS

- Bathroom Design & Planning
- Kitchen & Bathroom Installations
- Wall & Floor Tiling
- Insurance Works
- Wet Rooms
- Plastering
- Electrical Work



Contact Mark on
01332 515417 / 07789 883347
www.mickleoverbathrooms.co.uk

JB Decorators

For all interior and exterior decorating

All aspects undertaken including:

- Domestic/commercial
- Painting/wallpaper hanging
- Garden fences/gates/sheds
- Insurance work
- Out of hours/weekends
- All work guaranteed
- No job too small



For Free No Obligation Quote please call

Telephone 07813 315322

TIME TO RECLAIM YOUR LOFT SPACE

We are specialists in installing loft ladders and hatches for easy and safe access to your loft. We also provide boarding, lighting and insulation solutions. This 'Spring Clean' time we can help you turn your lost space into really useful loft space.



WHAT MAKES US DIFFERENT

- No waiting around. We arrive on time, every time
- Minimum 5 year guarantee on all our ladders
- Reliable, local company working in your home
- Extra confidence because we are accredited by Which? Trusted Traders
- Absolutely no mess and no fuss



Please call to book a FREE survey & quotation

01332 448404

WWW.ACCESS4LOFTS.CO.UK



ASCOT
BESPOKE
KITCHENS

BESPOKE
KITCHEN
SPECIALIST

Est.
1971

MODERN ○ TRADITIONAL ○ CONTEMPORARY
Manufactured in our 10,000sqft Factory in Derby

We are a Specialist Acrylic Worktop Fabricator
for Corian - Tristone & Encore Worktops



New Appliance Showroom Now Open!
Working Displays by Europe's Leading Manufacturers
NEFF • PRIMA • BOSCH • QUOOKER
MIELE....AND MANY MORE

ASCOT IN HOUSE FITTERS



WE
ARE
HERE

SHOWROOM
EXTENSION
NOW OPEN

Unit 1
Parcel Terrace
Derby DE1 1LY
01332 204064
www.abkkitchens.co.uk

Open 7 Days


Mon / Fri:
9 - 5

Sat: 10 - 2

Sun: 10.30 - 2.30

dj bathroom installations
A family run business

Office: 01332 239530
Mobile: 07507 941911
www.dj-bathrooms.co.uk



Complete bathroom / wetroom designed, supplied and installed at a competitive price to suit your budget

No job too big, or too small

No obligation quotes available on request

We will beat any like for like quote!

 **UK Blinds Derby**
Quality Blinds at Affordable Prices

- Vertical
- Rollers
- Roman
- Wooden
- Pleated
- Perfect fit
- Intu
- Conservatory specialists

No obligation design and quotation service from the comfort of your own home.

Great Quality & even better prices

Free Measuring & Fitting

Made in the UK for the UK

Family Run Business

All Blinds Guaranteed

For friendly help and advice contact:
01332 679717
Email: info@ukblindsderby.co.uk
www.ukblindsderby.co.uk

B. Dean
Home Improvements

- *Painting & Decorating*
- *Plumbing, Tiling & Flooring*
- *Kitchen & Bathroom Fitting*
- *Fencing, Patios & Landscaping*
- *Shelving, Lighting & small jobs*

For Quality Home Improvements and a free estimate contact Barry on 01332 511283 or 07789628143

- * Fully Insured *
- * No Job Too Small *



Tiler Tiling Tiles

Professional Domestic Wall & Floor Tiling

5★ Rating on:
www.ratedpeople.com/profile/Tiler-Tiling-Tiles

FREE Quotes
12 Month Guarantee

Call Phil: **01332 07594**
675598 366848

Derby & Surrounding Areas

Geeks Window Repairs

We dont sell upvc windows and doors we repair them

Steamed-up Windows	from £42
Window Handles	from £42
Door Handles	from £48
Window Hinges	from £65
Re-align Doors	from £42
Replacement Locks	from £120
Euro Cylinders	from £60

Including VAT and Fitting

We will not be beaten on Quality, Service or Price
For a free no obligation quotation call Geeks Now

Free Phone: 0800 77 202 77 Office: 01332 281360
WWW.Geekswindowrepairs.co.uk info@Geekswindowrepairs.co.uk

S&A Contractors Bathrooms Ltd



We Offer a Large Selection of:

- Bathroom Suites
- Bathroom Furniture
- Showers
- Shower Enclosures
- Tiles and Mirrors

With a full design service to help plan any bathroom

Please see www.sandacontractors.com for ideas

10% Discount on all installations when booking in March & April

Showroom:
93 Derby Road, Stapleford, Nottingham NG9 7AD
sandacontractors@me.com ☎ 0115 8777595



TV AERIAL SERVICES



Call James:
01332 773208

Mobile:
07585 110 578

DIGITAL FREEVIEW AERIAL & SKY SPECIALISTS

Family run business built on recommendations

Full Digital Aerial Installations
Free Tuning with all Installations
Extra TV and Sky Points
Low Cost Aerial and Sky Repairs
Freesat Installations
Free Quotes

Freeview HD **freesat HD**

E-mail: tvaerialservices@hotmail.co.uk

Hector's Electrics Ltd
Do You Find it Difficult to Find Someone to Come and do a Small Job?



- Extra Lights • Additional Sockets
- Rewires • New Fuseboards
- New Installations
- Landlord & Homebuyer Inspections
- Fault Finding & Repairs

Qualified Electrician • Fully Insured
Reliable Service • Tidy Work
Free Quotes • Flexible Hours
Reasonably Priced

Satisfaction Guaranteed

I Will Assure You of a Quick Response and a Reasonably Priced Service

call 01332 561867
 chris@hectorselectrics.co.uk
 www.hectorselectrics.co.uk

HOME & ROOF FIX
MULTI SKILLED TRADESMAN

MOBILE: 07517 317303

HOME Gardens / Landscaping • Fencing / Gates • Karchering
 Driveways / Patios • Bathroom & Showers • Tiling
 General Plumbing • Painting • Pointing

ROOF Leaks / Loose Tiles • Fascias & Guttering • Ridge Tiles
 Gable Ends / Chimneys • Felts & Tiling • Flat Roofs
 Firestone Roofs • Moss Removal

EMAIL: maintenance4lets@gmail.com

OAP's Discount - I.D & References Available
Payment on Completion of Job - FREE ESTIMATES

Lecaw
ELECTRICAL SERVICES
 DOMESTIC • COMMERCIAL • INDUSTRIAL

Your Local Electrician




Wireless Burglar Alarms
 Supplied & installed from £349



Electrical Installation
 Testing from £156



Full Rewires
 from £2,495

All prices include installation, materials & VAT – Subject to survey

- Re-wires • Part Re-wires • CCTV
- Landlord Inspection Certificates
- Fuse Board Upgrades • PAT Testing
- Shower Installations • Contracting
- Internal & External Sockets and Lighting
- Fault Finding & Periodic Inspections
- Electrical Insurance & Mortgage Reports

01773 599045
 www.lecaw.com • info@lecaw.com
 The Old Forge, Buckland Hollow, Ambergate, Belper, DE56 2HS

12 MONTH GUARANTEE

in **NAPIT** **JTL** **TRUST MARK** **f**

PLUMBING AND HEATING ENGINEER
07920 790047
CAIRNS
BOILER OR FIRE SERVICE?
NEW BATHROOM NEEDED?
LEAKING TAP?

Call Andy, your local heating and plumbing engineer now for a friendly and efficient service for :-

- Gas Boilers, Fires, Cookers - serviced, repaired, installed.
- Landlord Safety Certificates.
- Radiators - fitted, replaced, valves renewed.
- General Plumbing - from a new bathroom to a dripping tap!
- Free No Obligation Quotes
- No job too small or too large!



A and A Building Services

 All projects considered

These include:

Renovation works • Extensions

Kitchens & Bathrooms

Loft and Garage Conversions

and much more!

Free estimates given for all projects
Family run business

Call Andrew **07702 857918**

Established 1979
SER Plumbing Ltd

All types of Domestic Plumbing & Heating

- Central Heating Systems Serviced and Repaired
- Landlord Certificates
- Combi Boilers and System Boilers Installed
- Complete Bathrooms Fitted
- Any General Plumbing Work Undertaken

01332 832966 / 07889 090 886
email: stephenwellard@btinternet.com

BOILER REPAIR MAN
07503 882189



- Gas Boilers Installed Serviced & Repaired
- Gas Fires Serviced & Repaired
- Central Heating Systems Flushed
- High Efficiency Radiators Fitted
- Landlords Gas Safety Certificates

 **Call Jon: 07503 882189**

Murfin's 
PLUMBING & HEATING

01332 418 538
info@murfinsh heating.co.uk

Due to the success of our great offers we have extended them

New **Worcester Bosch 25i combi boiler** swap with standard flue, Worcester greenstar filter, Wireless controller and a 9 year guarantee.
(existing gas pipework needs to be correct and condense within 3m)

£1750^{+vat}

Boiler service still only £50^{+vat}
Two appliances serviced within same property **£80^{+vat}**

 **10 YEAR GUARANTEE**

We also do beautiful bathrooms
this bathroom supplied and fitted in Allestree for only **£5890** all in



 **572459**  **Worcester**
Bosch Group  **Castrads**
Est. 2006

Murfin's Plumbing & Heating
The College Business Centre,
Uttoxeter New Road, Derby DE223 WZ.
Tel: 01332 418538 Mob. 07739 846114


**Derbyshire
Tree Services**

- All Aspects of Tree Surgery
- Conifers & Hedges Trimmed
- Family Run Business
- 20 Years Experience
- Fully Qualified & Insured
- Waste Removed
- Landscaping: Inc. Turfing
Patios and Fencing

20% off with this advert

Tel: 01332 511217
www.derbyshiretreeservices.co.uk

Fernwoods
Fencing & Gardening Services

Get your FREE quote today
Telephone: 01332 765 272
Mobile: 07757 158 834





■ Fencing (All Types) ■ Landscape Design ■ Patios & Slabbing
 ■ Tree Surgery ■ Hedges Shaped & Trimmed ■ Sheds Erected &
 Removed ■ Lawns Laid & Maintained ■ Rubble & Hardcore Removal

PRESSURE CLEANING
CLEANING & RESTORATION
FOR ALL
TYPES OF SURFACES

CHEAP QUALITY FENCING
10 YEARS EXPERIENCE



Free Estimates

VERY RELIABLE & FRIENDLY SERVICE
ALL RUBBISH REMOVED FREE
GATES+CONCRETE POSTS+GRAVEL BOARDS
THICK HEAVY DUTY PANELS+5 DESIGNS
All Work Guaranteed, No Hard Sell, Call Dave.
Tel: 01332 281128
Mobile: 07957 368466
www.davethornley@btinternet.com


AGC Home & Garden Specialists

We specialise in every aspect of
Home & Garden Improvement, Repair & Maintenance

HOME	GARDEN
<ul style="list-style-type: none"> ● Plastering, Screeding & Rendering ● House Re-Pointing ● Brickwork ● Renovations ● Small Extensions ● Chimneys ● Repoint / Rebuild ● Roofs ● Repair / New Roof ● Guttering Services ● New & Old ● Fascias & Soffits ● Tiling ● Kitchens & Bathrooms ● Handyman 	<ul style="list-style-type: none"> ● Fencing ● Patios ● Paving & Driveways ● Landscaping ● Hedge Trimming ● Garden Walls ● Tree Work ● Handyman ● Grass Cutting

No Job Really is too Small!

Call: 01332 511904 / 07741 490341
 Email: agchomeandgarden@aol.com
 Web: agc-home-and-garden.webnode.com

Over 25 Years Experience

Quality Workmanship • Extensive Knowledge • Free Consultation

CLEARWAY WASTE SOLUTIONS
Domestic & Commercial

We remove all your unwanted
household & garden waste,
from single objects to
whole buildings including
hardcore, bricks and more...



All waste is recycled
where possible.

**From
£30**

Call now for your free quote
01332 765 272
07757 158 834


MPG Buildings & Artificial grass

Beautiful natural looking lawns without the fuss



Why Choose Artificial Grass?

- ✓ Child & Pet Friendly
- ✓ Easy to Maintain
- ✓ Highly Durable
- ✓ Water Resistance
- ✓ Natural Looking and Affordable

Timber Sheds and Summerhouses

- Best Quality Timber and Built by Hand
- We're Pleased to Discuss Particular Requirements
- Free Delivery & Installation

Our show site is on the Leisure Kingdom, Hilton, where we have selection of garden buildings and artificial lawns on display.

Show Site Open Hours
 Monday - Saturday
 10.00am - 4.30pm
 Sunday
 11.00am - 1.30pm
 (Closed on bank holidays)





Contact us:

Leisure Kingdom, Egginton Road, Hilton, Derbyshire DE65 5FJ
 (follow brown signs to Leisure Kingdom)
 T: 01283 736133 email: Advice@MPGBuildings.co.uk
www.mpgbuildings.co.uk www.artificiallawnsderbyshire.co.uk

We are proud to remain a family business with a wealth of experience



Divide & Multiply

Like me most gardeners can't resist a free plant or even better, lots of free plants and in early spring I need plenty of plants to fill the gaps and create new designs. Also, we are potting up divisions for our nursery stock.

Most perennials and some shrubs can be divided to create more plants for your own garden and to share with family and friends.

It's only worth dividing healthy plants - diseased plants will produce diseased divisions which is a waste of time. It's also a great opportunity to remove pests hiding in the clumps. Hunt out slugs, chaffer grubs, vine weevil grubs, wireworms,

cutworms and the whole ghastly host of things that eat plants from underground.

In our garden dividing goes on most of the year: there's always something ready to lift and separate but in late winter and early spring we are focussed on the late flowering perennials. The rule of thumb is to divide after flowering but it's risky to divide in late autumn or early winter so late bloomers like heleniums, phlox and the like are best tackled in late winter which for us means mid-February to early March, but we are on free-draining soil. Those of you on sticky clay might want to leave it a bit later.

Some perennials have plenty of new

growth by late winter and it's just a matter of chopping pieces from the edge of large clumps or if you want lots of new plants, digging up the whole clump and breaking it up into individual plantlets. Some plants like heleniums or asters are very obliging and fall apart into individual plants and if your soil is warm and accommodating you can plant these out straight away, otherwise pot them up and pop them in a cold frame, cold greenhouse or by a sheltered but sunny wall.

For plants like hostas the prime time for dividing is when the pointed buds are just poking through but before the leaves unfurl. Hostas form hard root balls that are pretty much impossible to break up. The answer is to cut slices from the clump like cutting a cake. I use a cheap, serrated bread knife for this job as an expensive tool could be ruined by hitting stones in the soil. You can then replant the clump and fill in the missing slices with soil mixed with compost and fertiliser: the plant will soon fill in the gaps. This is good method with lots of plants with hard root stocks. It is sometimes possible to use a sharp spade to cut the slices without the need to dig up the clump.

It is possible to divide completely dormant perennials that aren't showing any top growth. The late flowering Joe Pye Weed (eupatorium) are one such. If you dig up a clump (no mean feat as they are really hard and woody) the roots and stems look completely dead. It's quite easy to break off pieces that just look like dead sticks with a bit of bristly roots. It seems odd to plant or pot up these "dead" pieces. But come May fresh buds show and new shoots quickly grow. It's a reminder that perennials and shrubs can look completely dead before spring growth starts.

Likewise, Burnets (sanguisorba), Veronics and Veronicastrums can look completely dead at this time. With these the cheap breadknife comes in handy again to saw off pieces for planting or potting.

It's a busy time in the garden and greenhouse dividing, planting or potting up and just as you think you've done it all, it's time to start dividing spring flowering bulbs and plants when they have finish flowering! That's for another article I'm off out with my spade and breadknife! Martin Blow



Janet & I run Special Perennials, our website www.specialperennials.com is full of colour photos and growing tips. We sell by mail order and at Plant Hunters' Fairs only throughout the season. Please see www.planthuntersfairs.co.uk DATES FOR YOUR DIARY 2019 We will be at the Plant Hunters' Fair at The National Memorial Arboretum, Alrewas DE13 7AR on Sunday 10th March 2019, free entry to Plant Fair & Arboretum; Carsington Water, Ashbourne DE6 1ST on Saturday 16th March, free entry to Fair & Country Park; Sugnall Walled Garden, Nr Eccleshall ST21 6NF on Saturday 23rd March, Fair & Garden entry £1; Patching Art Centre, (NEW EVENT) Calverton, Notts NG14 6NU on Saturday 30th March, free entry to Fair & Art Centre; Middleton Hall, Nr Tamworth B78 2AE on Sunday 31st March, entry to Garden, Hall and Fair £3; Consall Hall Gardens, Wetley Rocks ST9 0AG on Sunday 14th April, Fair & Garden entry £3; We are happy to bring orders to plant fairs for you to collect.

Covering The Littleover Area **Martin Page Tree Surgeon**
YOUR LOCAL  **Tree Surgeon**

Have you considered your trees may need some maintenance from time to time. Are your trees maybe too tall? blocking light, unsafe or untidy? Or maybe you need to remove that stubborn stump. Do your hedges, Conifers or shrubs need trimming. With 30 years of experience working with trees in your area, I would be pleased to offer you free advise and a free quotation. **call me now on 01332 639594**

charnwood tree services

I also sell high quality hardwood logs



 Fully insured
 Local family business
 Clean & tidy service

 **01332 639594**
 Constantly Recommended

Landscape Maintenance Services
 T:01335 343 888 M: 07966 139 459
 Please visit our web site for more information www.landscapemaintenanceservices.co.uk

PROFESSIONAL TREE CARE

Welcome to Landscape Maintenance Services Ltd, specialist in Arboriculture based in Derbyshire. With a wealth of knowledge in all aspects of tree work, we specialise in tree removal, crown thinning, dead wooding and crown reduction; also high hedges. We are Council approved, and are able to undertake all aspects of arboriculture; no job is too big or too small. We comply 100% with all latest legislation and can deal with TPO and Conservation area applications. We have invested heavily in arboricultural equipment including our very own Cherry Picker, helping to make us more efficient than our competitors, which in turn, helps keep the cost down for you, our customer.

High Hedges No Problem Narrow Access Stump Grinding


- All Aspects Of Tree Surgery Undertaken To BS 3998 : 2010 'Tree work Recommendations'
- Tree Reports & Surveys; Duty Of Care
- BS 5837 Root Protection Surveys
- Stump Grinding
- Air Spading
- Cherry Picker Hire with Operator
- Hardwood Logs For Sale – well below 20% moisture
- Fully Insured & NPTC Qualified
- CHAS Registered

For all enquires email: simon@landscapemaintenanceservices.co.uk

W WROUGHTART

Automatic & Manual Gates
 design, manufacture, installation, access control, servicing & repairs



Manufacturing bespoke gates and railings since 1969

Specialist fabricators of steel, stainless steel and aluminium structures for residential and commercial properties

www.wrought-art.co.uk
01332 340563

AG JOINERY

- ✓ Bespoke Built-in Furniture
- ✓ Kitchen & Bedroom Installation
- ✓ Worktop Replacement
- ✓ Wood & Laminate Floors
- ✓ Internal & External Doors
- ✓ Decking - Fencing - Gates
- ✓ Property Maintenance
- ✓ ALL JOINERY WORK UNDERTAKEN

FREE ESTIMATES
DERBY BASED
07966547850
AGJoinery@gmx.com
www.agjoinery.co.uk

Steve Frost
Windows. Doors. Conservatories. Fascia.

UPGRADE YOUR OLD CONSERVATORY ROOF FOR A NEW ALL YEAR ROOF

Replacing your old conservatory roof to a new warm roof stops you feeling cold in winter and too hot in summer.

- Upgrade your double-glazed units to planitherm energy saving glass, with argon gas infill and warm edge spacer bar to save more heat.
- All windows, doors and conservatories are made to suit your individual taste and design.
- We are always happy to arrange viewings of past installations to see our full quality and range available.

For your free no obligation quotation contact us on:
01283 701 458
 email: steve@villagec.co.uk
 65 Findern Lane, Willington, Derby, Derbyshire, DE65 6DW

Classifieds

Do you have any items under £1000 in good condition that you would like to sell?

If so, then please send a brief description with your price and telephone number to classifieds@warwickdirectories.co.uk and space allowing, we will include them in the next edition. If you have an item over £1000, you can list them for £10.

Payment must be made upon booking. Please call for more details. We would like to ensure that our "Classifieds" pages are benefitting our readers in the delivery area, so when emailing your entry please now provide your name, address and landline number. This information will NOT be used for anything other than to monitor the fair use of these pages.

Please note our new guidelines for these pages that are offered as a free of charge service for our readers

* please keep to 4 items per entry

* please keep your description brief

* We will only run the same items a maximum two times

We thank you for your help in keeping these pages working well for all.

For Sale...

Mobility Scooter – grey Rascal Liteway 4 Plus, 4-wheel scooter, 2 baskets, arm rests, battery & charger, rain cover, excellent condition, £500 ono.
Tel: 07970 616858

LCD TV – Sony Bravia KDL26S4000, 26" flat screen, piano black, little used, mint condition, full working order with remote, £35.
Tel: 07889 890885 Quarndon

Mobility Scooter – Rascal mobility scooter, £50.
Tel: 01335 370705

Halogen Heater – Silver Crest, new, 3 setting, £15. Hi-tech trainers, size 9, new, £15. 2 pairs of Pegasus jeans, size 36, £14.
Tel: 07929 219454

Table Saw – Makita with 2 blades, £70 ono. Perform Mitre Saw, as new, £30. Brass gas fire fret, £5. 18th Century oak gate leg table, £100.
Tel: 01332 551642 Allestree

Aerobic Step – 3 adjustable heights, £6. Carl Lewis treadmill, very little used, excellent condition, can be seen working, £50. Extra wide stair gate 30" – 32" (76cm – 82cm), as new with all fittings, £12. Fold up single bed with mattress & cover, £25.
Tel: 01332 521540 / 07815 661640 Littleover

Acer Chromebook 14 – up to 14hr battery life, bought Sept 2018, receipt & guarantee available, reason for sale: too old for this technology and reverted back to a laptop, unused, £125.
Tel: 07709 517429 Littleover

Washing Machine – Indesit, 8kg, excellent condition, easy to use, very quiet, 1400 spin, £110 ono.
Tel: 07956 339418 Allestree

Sandstone Blocks – for building a rustic wall approx 1m x 4m, £100 buyer collects.
Tel: 01332 514642

Car CD/Radio – BMW Business 2009 BMW1 series, ref Viseon ra92105 100 11, as new, owner has replaced with blue, £50.
Tel: 01332 556538 / 07792 247661

Dining Table – gateleg, polished mahogany colour, W3ft x L5ft fully opened, with 4 wooden dining chairs having padded seats, all in good condition, £175 ono.
Tel: 01332 559544 Darley Abbey

Exerciser – Twist & Shape, good condition, Argos selling for £99.99, accept £37 ovno. Buyer uplift or deliver Hilton.
Tel: 07527 436330

Ladies Short Winter Coat ex Debenhams, beige, small size 16, double breasted, two pockets, length from neck 72cm, worn twice, very warm & comfortable, £12.
Tel: 01332 511911 / 07746 694402 Littleover

Metal Trailer – 34" x 61", electric, with spare wheel, £40.
Tel: 01283 814294 evenings only Hatton

Conservatory Furniture – sofa, 2 arm chairs, a lamp table and a poof stool, excellent condition, buyer to collect, £100 ono.
Tel: 01332 516431

All goods are bought at your own risk and the sale, condition and exchange of monies is not the responsibility of Warwick Directories Ltd. This is a free of charge service so please, only private individuals selling genuine items and no businesses.

Sideboard – light teak, £85. Light teak table 5ft, £65. Girls bike, 24" wheels, £30.

Tel: 07714 004685

Space Save Tyre – new, unused, £70 ono.

Tel: 01283 734082

Table top fridge – As new, black, six weeks use, £30. Heavy bronze effect chandelier with chain, £250, can email photos, margaretannngordon@me.com.
Tel: 01335 418517

Wanted...

Open-Reel Tape Recorders – any make, age or condition considered.

Tel: 07966 239391 / lainbetson@gmail.com

Coins & Medals – wanted by collector, complete collections, large or small or individual items, including gold coins.

Tel: 01332 559115 / coin.collector@virgin.net

Subbuteo – football teams & accessories wanted by keen local collector (retirement hobby).

Tel: 01332 348491 / 07762 088228 / j.gould30@ntlworld.com

Corner TV Table – in dark wood.

Tel: 01332 361433.



Affordable & Reasonable Quotes!

Tiling	Professional Wall & Floor Tiling
Plumbing	Radiators, Pipe Repairs/Leaks
Bathrooms	Bathroom/Shower Fitting
Flooring	Laminate & Wood Floor Fitting

visit my website: www.ajmservices.biz
for a free quotation call Andrew on...
07866 309128 or 01332 605156



DECORATORS
COMMERCIAL & DOMESTIC

- All Aspects • Free Quotes •
- Commercial / Domestic Work Undertaken •

Tel 01332 771884 Mobile 07891913068
info@dbdecorators.com
db-decorators.co.uk



Mark Pennington
Electrical Services

Over 30 Years of Experience in the Industry
Domestic & Light Commercial Works Undertaken

Full & Partial Rewires • Electrical Condition Reports
Consumer Unit Upgrades • Additional Sockets or Lighting

Call Your Local Electrician
on **07896 529966**

Double Glazing Repairs (Mickleover)
Lowest Prices & Best Service Guaranteed

- Misted & Broken Units Replaced
- Replacement: Handles, Locks, Hinges & Seals
- Catching PVC Doors Realigned
- Friendly Free Advice & Quotes for the Best Solution
- Insurance Approved Locks
- Absolutely NO Hard Sell • Senior Citizen Discounts

Evening & Weekends Appointments
Please Contact us on:
01332 737678 / 07464 169553

Beautiful Blinds
domestic & commercial

Derwent Blinds

- Free Fitting & Measuring
- Select at Home

For a fast, local service from our family business
9am - 8pm 7 days
01332 344286
www.derwentblinds.co.uk



JAMES DEAN
PLUMBING & BATHROOMS

Specialising in complete
Bathroom Installations &
all aspects of Plumbing,
Home Maintenance & Tiling.

City & Guilds qualified plumber with over 20 years trade
experience providing a local, friendly & reliable service.

Please call James for a free no obligation quote
07950 520376
james_plumbing@outlook.com
@jamesdeanplumbing

 City & Guilds
Qualified



Useful Numbers

Police

Derbyshire Constabulary 101

Hospitals

Royal Derby Hospital 01332 340131
Children's Emergency Department 01332 786873
Emergency Department 01332 783111
Medical Assessment Unit 01332 788707
NHS Direct 111

Utilities

Gas 0800 111 999
Electricity 0800 056 8090
Water 0345 145145
Severn Trent Emergency (24hrs)
(Water leaks & sewerage issues) 0800 783 4444
Severn Trent Billing Enquiries 03457 500 500

Councils

Derby City Council 01332 293111
Derbyshire County Council 01629 580000
Household Waste Collections
Helpline 0333 2006981

Travel

East Midlands Airport	01332 852852
Birmingham	0844 576 6000
Gatwick	0870 000 2468
Heathrow	0870 000 0123
Luton	01582 405 100
Manchester	0161 489 3000
Stansted	0870 000 0303
British Rail Enquiries	08457 484950
Barton / Trent Buses	01332 292200

Helplines

Samaritans	freephone 116123
Rape Crisis Group	01332 372545
Consumer Direct	08454 040506
Citizens Advice Bureau	01332 295711
Age Concern	01773 768240
NSPCC	01332 294652
RSPCA	0300 1234 999

Churches

Littleover Baptist Church	01332 770969
St Peters Church	01332 767802
St Mary's Church	01283 733433
Hilton Methodist Church	01283 812265
Our Lady Of Lourdes	01332 514107
Littleover Methodist Church	01332 365045
St Andrews Church,	
Blagreaves Lane Littleover	01332 270387
Haven Christian Centre,	
Heatherton Village	01332 519707

Miscellaneous

Key Door	
Locksmith Solutions	01332 948100
Littleover Dental Practice	01332 776177

Littleover Life will be distributed during the first week of every month (or as near to it as possible). All artwork must be completed and proofed no later than the deadline date. All monies must be paid by the invoice date. Not conforming to these guidelines could result in adverts being withdrawn from being published. We reserve the right not to publish certain adverts. We cannot be held responsible for any inaccuracies in advertisements nor any consequences arising from this. We are not to be held responsible for damage or loss of copy or error in printing. It is the advertiser's responsibility to ensure conformity with the Trades Descriptions Act 1975, Business

Advertisements Disclosure Order 1977 and Sex Discriminations Act 1975 and the Consumer Credit Act 1974. All artwork used in Littleover Life and produced by Warwick Directories Ltd must not be published in any other media without our permission as this is a breach of copyright laws.

We would like to thank the various advertisers who have helped to make this directory possible. However, it must be pointed out that the accuracy of any statements cannot be warranted, nor any products or services advertised guaranteed or endorsed.

SKY HIGH TREE CARE & FENCING SERVICES

FULLY QUALIFIED
& EXPERIENCED
TREE SURGEONS

WE COVER ALL ASPECTS
OF TREE SURGERY

TREE FELLING - TREE TOPPING
TREE RE-SHAPING - TREE PRUNING
SITE CLEARANCE



All aspects of Decking
undertaken to the highest
standards



ALL ASPECTS OF GARDEN FENCING & GATES.
ALL OUR WOODEN FENCING IS PRESSURE
TREATED AND HIGH QUALITY.
WE ALSO USE CONCRETE POST AND GRAVEL BOARDS.

Please Telephone **KEVIN** Today For Your FREE Quotation

07792 089504 - 01332 589025

Email: skyhightreecare25@outlook.com

Web: skyhightreecare.co.uk

We won't be beaten on value for money!



The Family Funeral Service

Pre-arrange & Pre-plan for your perfect goodbye



Angela Knight - Funeral Conductor

- ✓ Reduce the worry for your loved ones
- ✓ Fix your funeral director's costs and make a contribution to third party costs
- ✓ Range of plans or personalise your own funeral
- ✓ Pay by monthly installments over 1, 2, 3, 4, 5 years
- ✓ No medical checks and no upper age limit
- ✓ Plans can be transferred if you move - terms & conditions apply

"Fantastic friendly and supportive service from the moment we made our first call"

Littleover

Meek House, 521 Burton Road, Littleover, Derby DE23 6FT

01332 913 112

www.lymn.co.uk  [/awlymn](https://www.facebook.com/awlymn)  [/awlymn](https://www.twitter.com/awlymn)



"Our family serving your family since 1907"